

New housing estate -
15 apartaments
Grolandstraße 70
90408 Nürnberg

Contractor: Heidemarie Wangemann
& customer:

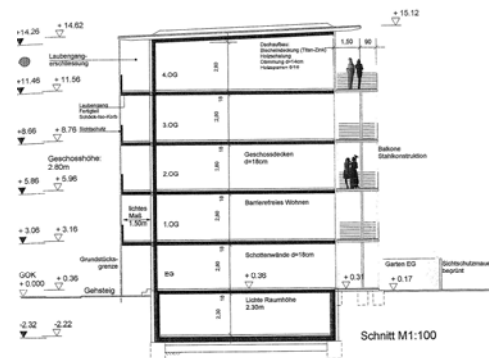
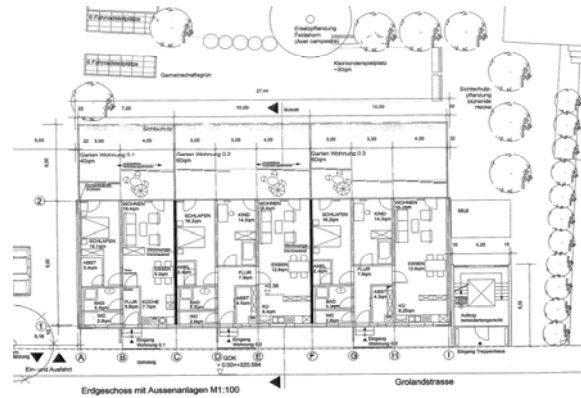
Project planning: Architektin
Christa Baumgartner

Civil company: Mauss Erlangen

Period fixed: 2004 - 2005

Settled costs: ca. 0,6 Mio. €

Output PSS: Support structure planning
Service phase 2-6+8
HSE coordination





4 housing estate with underground garage Düsseldorfer Straße in Nürnberg

**Contractor:
& customer:** IMMO Heilbronn

Project planning: Architekten
Semmer - Rammensee - Dietz

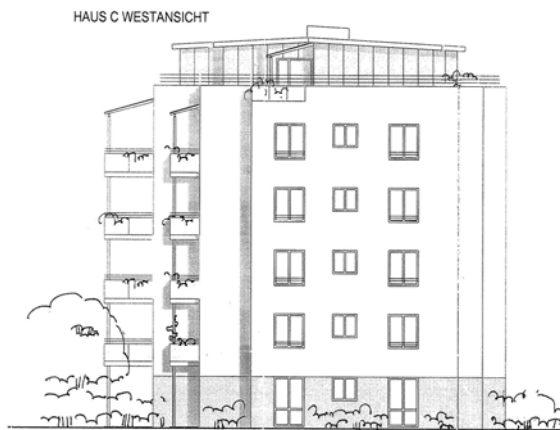
Civil company: G.Schenk

Period fixed: 2004 - 2006

Settled costs: ca. 2,6 Mio. €

Project data: 52 apartments
in 4 buildings
underground garage with 54
parking lots

Output PSS: Support structure planning
Service phase 2-6
HSE coordination



Housing estate with underground grage Langseestraße in Nürnberg Mögeldorf

- Contractor:** G.Schenk Wohn- und
Gewerbepbau GmbH
And customer: Architekt Reiter
- Project planning:** Architekt
Reiter + Partner
- Period fixed:** 2004 - 2005
- Settled costs:** ca. 1,9 Mio. €
- Project data:** 39 freehold apartment
in 4 houses
underground garage with 49
parking lots
- Output PSS:** Support structure planning
Service phase 2-6 +8

